

monitor **LiFTS** 1930R Spider Lift

1930R Spider Lift



The vertical lift path of this knuckle-boom model affords an unrestricted 200kg envelope with excellent up-and-over reach.



The huge amount of travel in the stabilizer legs allows you to set up on very uneven ground. Narrow width set up is also possible.

The radio control drive option allows for extra safety when driving in difficult areas.



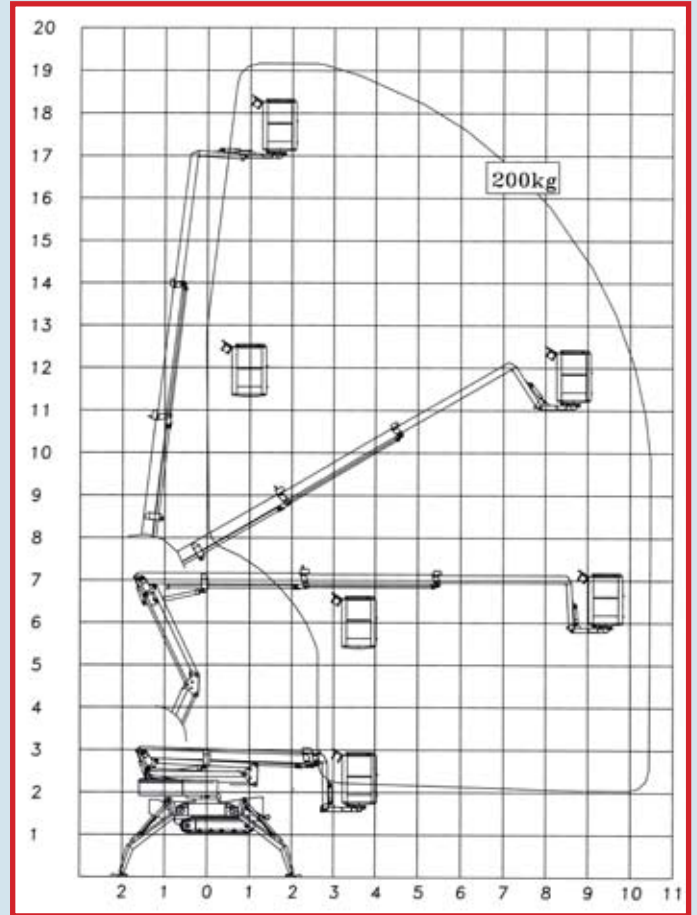
Total package weight with heavy duty steel trailer: 4490kg



The compact dimensions are what gives spiderlifts the edge in confined locations.

Technical Features

SPECIFICATIONS	
Max. Working height	19.10 m
Max. outreach	10.20 m
Basket load	200 kg at full height
Rotation	2x400°
Aluminium basket	1.25 x 0.8 x 1.11
Power sources:	
Diesel engine	14 kW/18.8 hp
Generator	24V/22A
Battery	24V/200Ah/5h
Built-in automatic charger with stand-by function (230V)	30 A
Transit length	5.90 m
Transit height	2.07 m
Transit width	1.10 m
Operational width	4.25/3.45 m
Weight approx.	3250 kg
Manoeuvrability across slope up to	30% (16.7°)
Gradeability up to	35% (19.3°)
Deployment capability up to	40% (21.8°)
Proportional Controls	+
230V outlet in basket	+
Transformer	O
Wireless remote control	O
Non-marking tracks	O
	+ Standard O Optional



Complies with AS1418.10 (Int. 2004.)

